

Meeting Info

Our next meeting is on **February 9th.**

Bob Smith will demonstrate the inside-out turning techniques used to make Christmas ornaments

See you there!

Club Challenge

The challenge for the February is any turning with inlay.

Bring your challenge pieces for an entry in the monthly and yearly drawings.

Treasurer's Report

Monthly Revenue: \$240.00 (from Annual Dues)

October Expenses: \$316.74 (AAW membership, lathe tools, website domain renewal)

Current Balance: \$5089.36

Remember to place your Amazon orders through <https://smile.amazon.com> It's FREE. Select **Portneuf Valley Woodturners Association Inc.** as your charity. We received \$128.50 in 2021.

2022 Membership Dues

We will be accepting Membership Dues for 2022 at the next meeting. Dues are \$30/year.

President's Message

Elections: Elections were held at the December meetings and all nominees received a majority vote. Your new Board of Directors are: Kevin Scott, Eron Evans, Buz Taysom, Kelly Crompton, Kelly Jensen, Bob Smith, Jeremy Coleman, and Jared Smith. The Board held its first meeting on January 12th and selected officers. Kelly Crompton will service as President, Buz Taysom as Vice President, Kevin Scott as Treasurer and Jeremy Coleman as Secretary. I will stay on, as "Past President." THANK YOU all for stepping up!



Demonstration

Kevin Scott showed a number of inlay techniques and explained how to use them in various turnings. He uses a variety of materials including Milliput, epoxy, CA glue, wire, metal shavings and coffee grounds. Defects in the wood are cleaned out and embellished using a knife or dermal tool and filled with various materials. Kevin recommends a hot-glue gun and wearing a face mask when scraping metal.



Epoxy and coffee grounds and
blue resin with pearlescent
powder



Blue resin + brass shavings =
Green



Copper wire inserted into the
bowl before it was finished
turned.

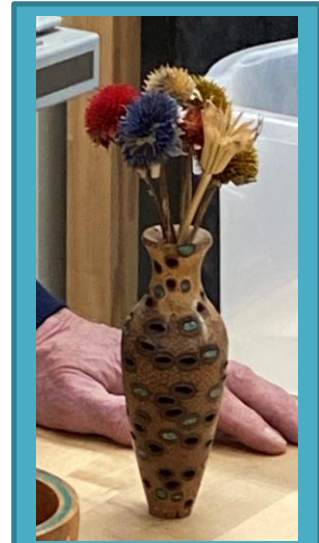
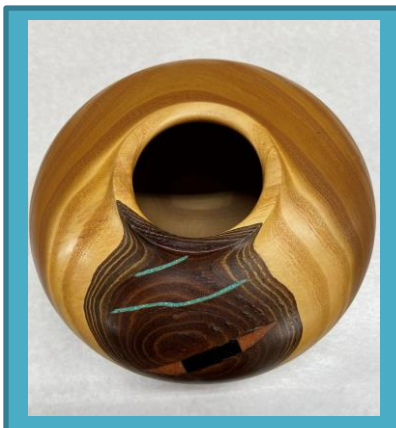
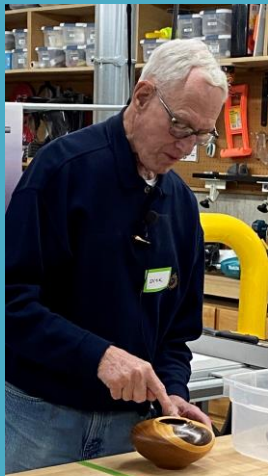


Epoxy rings: packing
tape was wrapped
around the turning and
the epoxy poured into
a slit in the tape.

Crushed turquoise
mixed with blue resin



Dick Anderson showed a couple of his past inlay projects and explained the techniques he used.



Members Gallery



Tracy
Casselman





Thank you All for continuing
to "show your stuff".